



PACP
PORTUGUESE AMERICAN CITIZENSHIP PROJECT

A NON-PARTISAN INITIATIVE TO PROMOTE CITIZENSHIP AND CIVIC INVOLVEMENT

**CITY OF SANTA CLARA, CA
EVALUATION
OF
THE 2012 ELECTIONS**

**PREPARED
MAY 10, 2013**

Supported by Luso-American Foundation
Government of the Autonomous Region of the Azores
Business and Community Leaders in the Portuguese American Community

REPORT CONTENTS

Statistics and Summary of Work	2
Results	2
Results Graphs	3
Voter Turnout Summary	3
Voter Turnout by Age	4
Voter Turnout by Age and Gender	5
Voter Turnout - November 2012 by Gender and Party	6
Voter Turnout – 2008 vs. 2012 Presidential Elections	7
Appendices	8
Registered Voters by Age and Gender	9
Registered Voters by Age and Party	10
Registered vs. Actual Voters by Age and Gender	
November 2012	11
Registered vs. Actual Voters	12
Actual Voters by Gender and Party – November 2012	13
Voted in both 2008 and 2012 Presidential Elections	14
Voted in all last three elections	14

Key Statistics – 2012

Voter turnout data received from Santa Clara County April 4, 2013.

Voters with Portuguese Last Names (*City of Santa Clara in italics*)

➤ Voters:	2,591 (46,504)
➤ Voter Turnout - June 2012:	29.2% (62.2%)
➤ Voter turnout – November 2012:	66.2% (75.9%)

Summary of Work

A list of voters with Portuguese last names was created for the City of Santa Clara by extracting voters from the Santa Clara County list of registered voters and selecting them against a list of Portuguese last names. This list was developed by the Portuguese American Citizenship Project. Reminder cards were sent out for the November, 2012 election.

Results

The voter turnout among voters in the City of Santa Clara with Portuguese last names was lower in the June and November elections of 2012 than the City of Santa Clara as a whole. Turnout for this group for the June primary election was 29.2% vs. 62.2% for the City. Turnout for the November presidential election was 66.2% for voters with Portuguese last names vs. 75.9% for the City. Voter turnout among voters with Portuguese last names was higher than the City for the November 2008 presidential election with 75.3% vs. 72.7% for the City.

Voter turnout is significantly higher in all age groups for the City in the June election and slightly higher for all age groups in the November election.

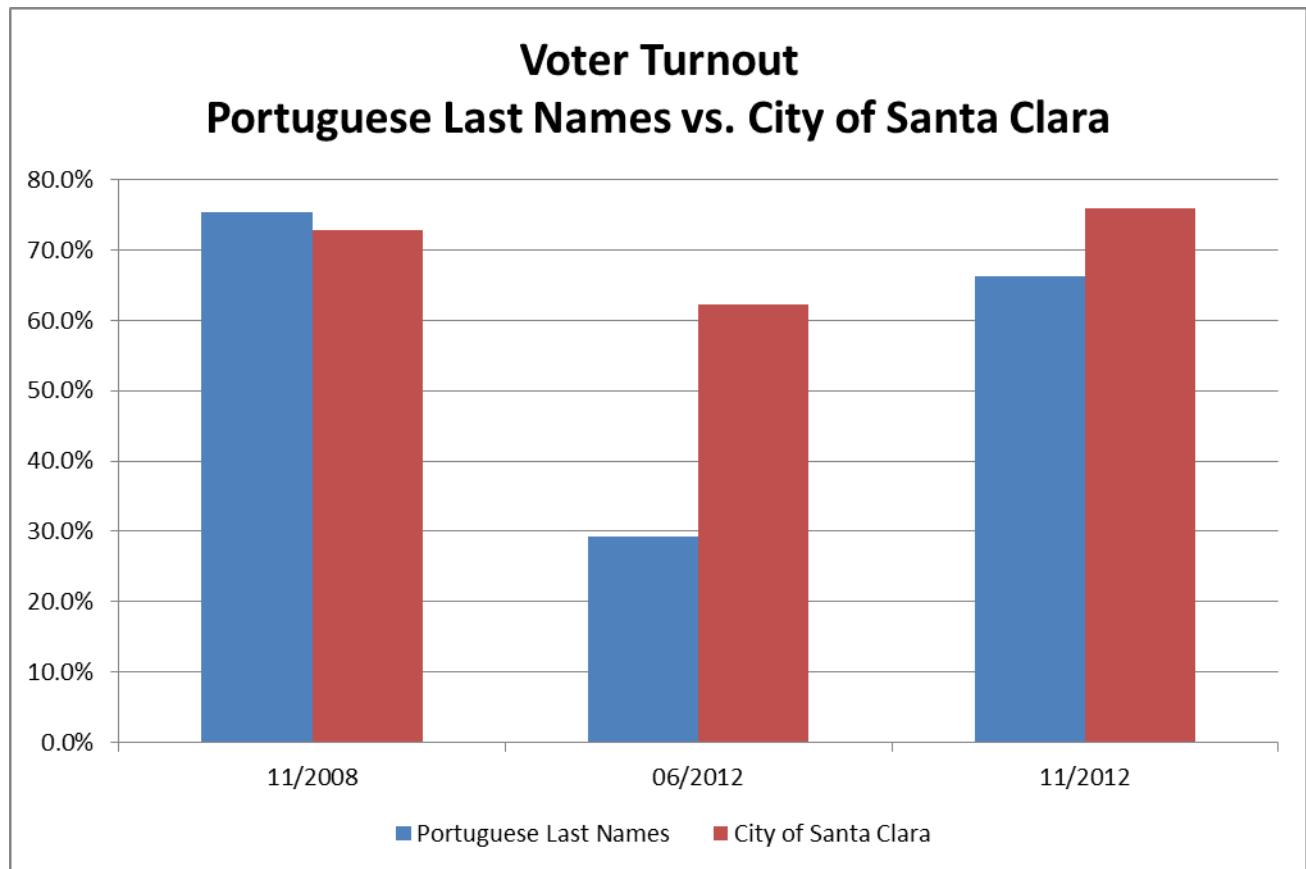
Women voters under age 60 had higher turnout than men in the November 2012 election, while male voters 60 and older had higher turnout than women. Turnout for all age groups and genders was higher for City voters than for those with Portuguese last names.

More voters with Portuguese last names are registered as Democrats among all age groups. A significant number of voters with Portuguese last names under age 50 are considering themselves Independents. City

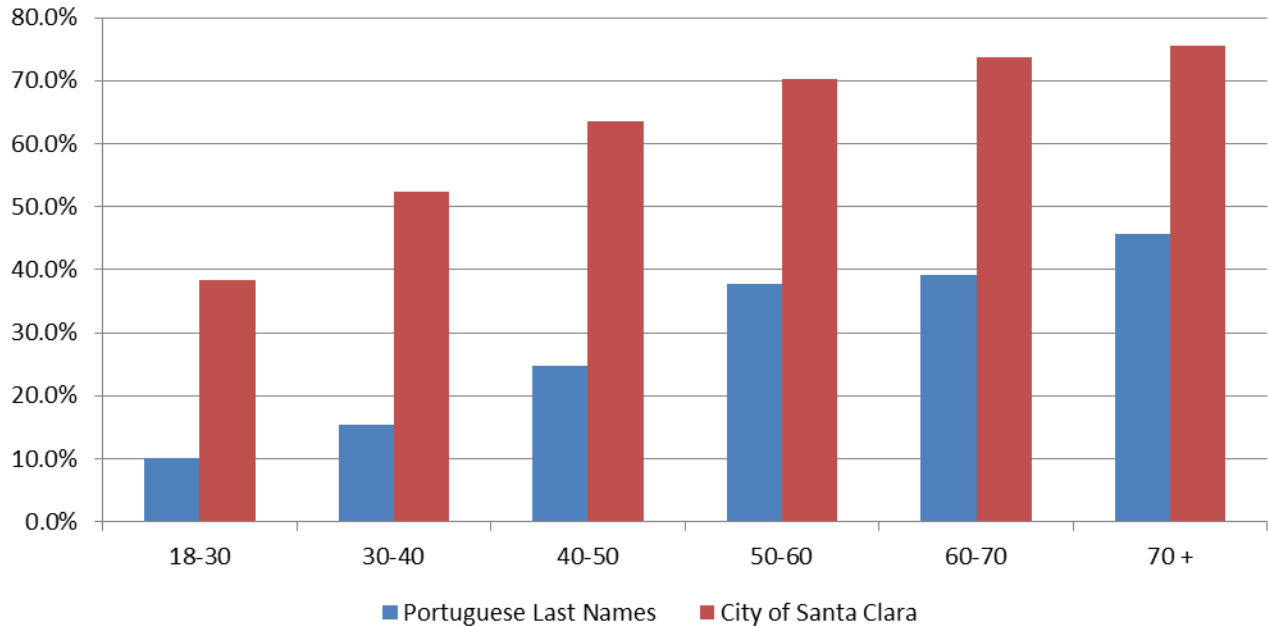
voters are also mostly registered as Democrats, however significantly more voters under age 50 are considering themselves Independents.

The following graphs summarize voter turnout by age, gender and political party affiliation.

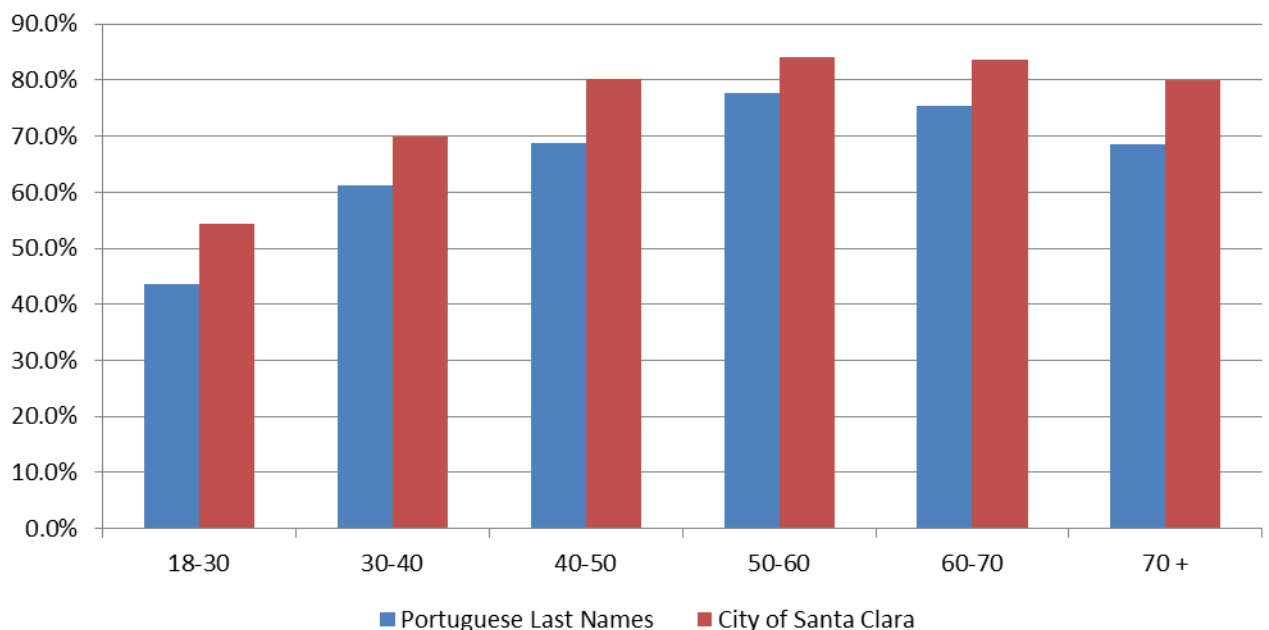
Results Graphs



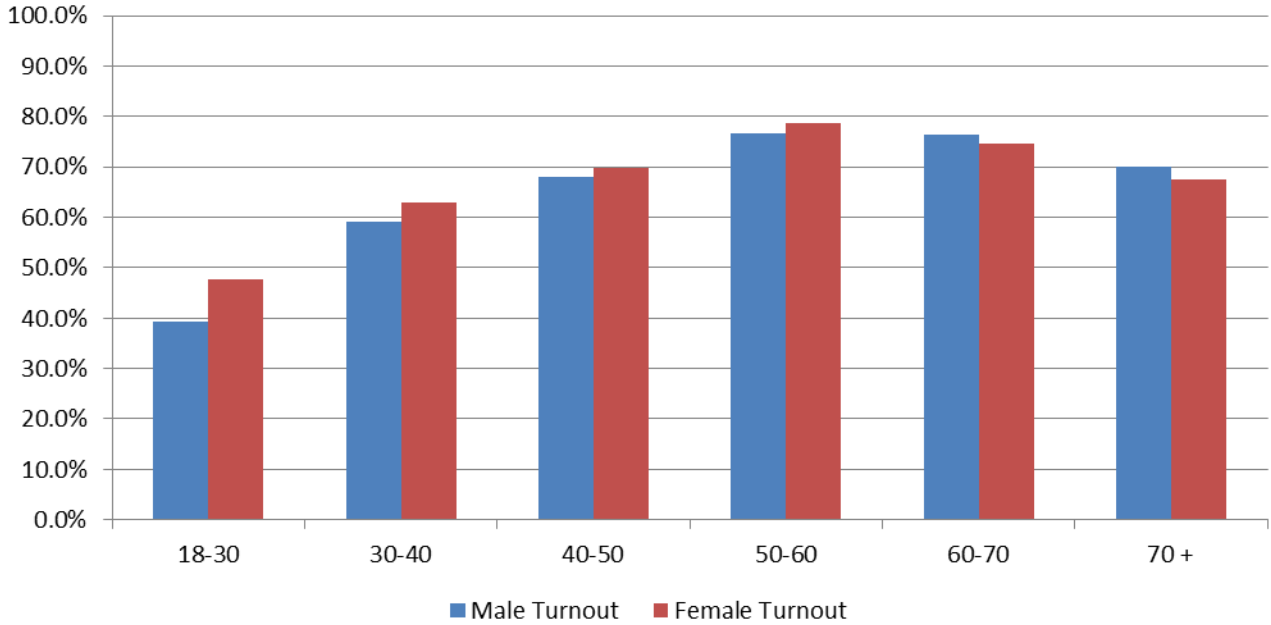
Turnout By Age - June 2012 Santa Clara With Portuguese Last Names vs. the City of Santa Clara



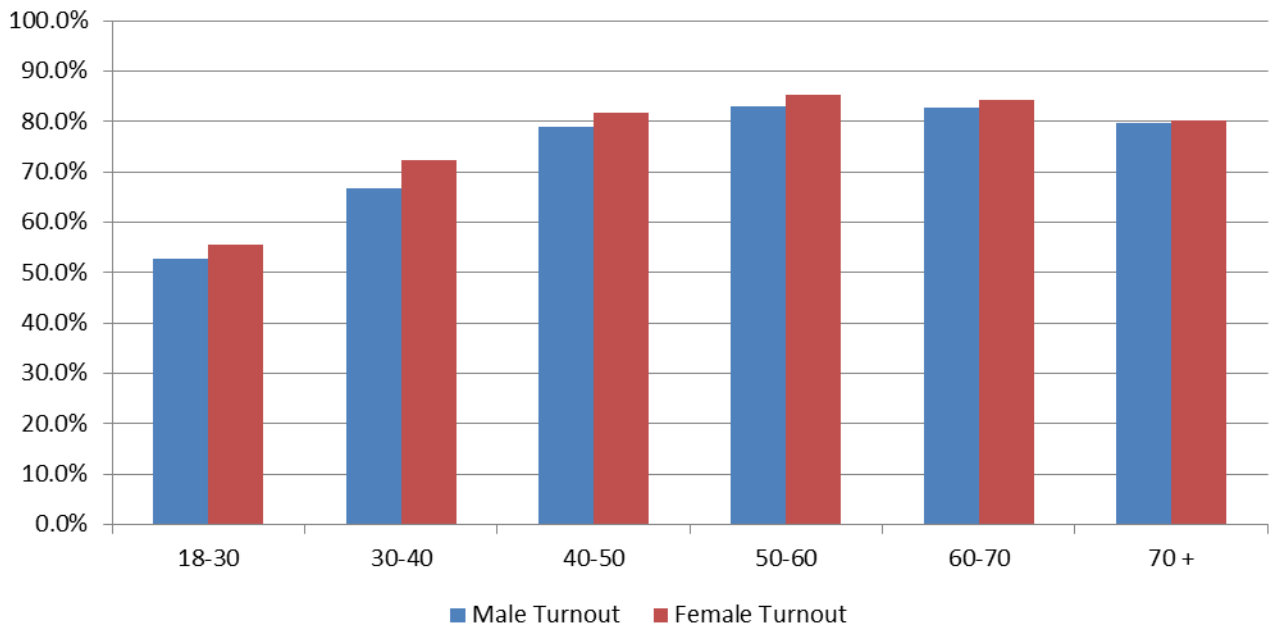
Turnout By Age - November 2012 Santa Clara With Portuguese Last Names vs. the City of Santa Clara



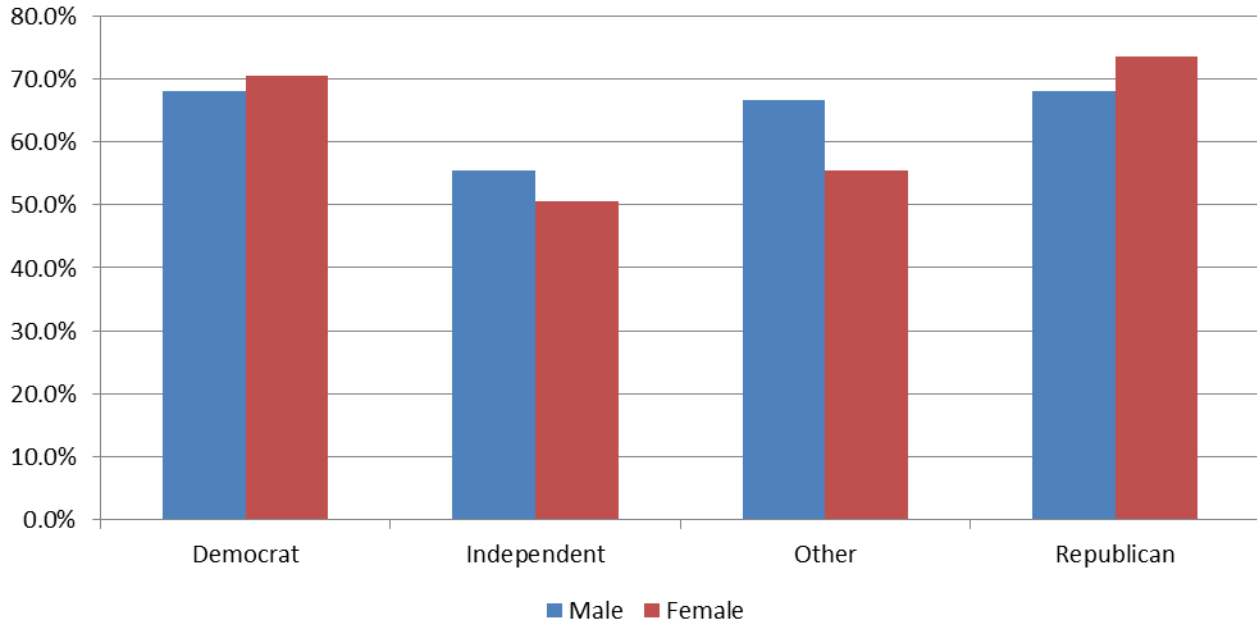
Voter Turnout by Age and Gender November 2012 Santa Clara With Portuguese Last Names



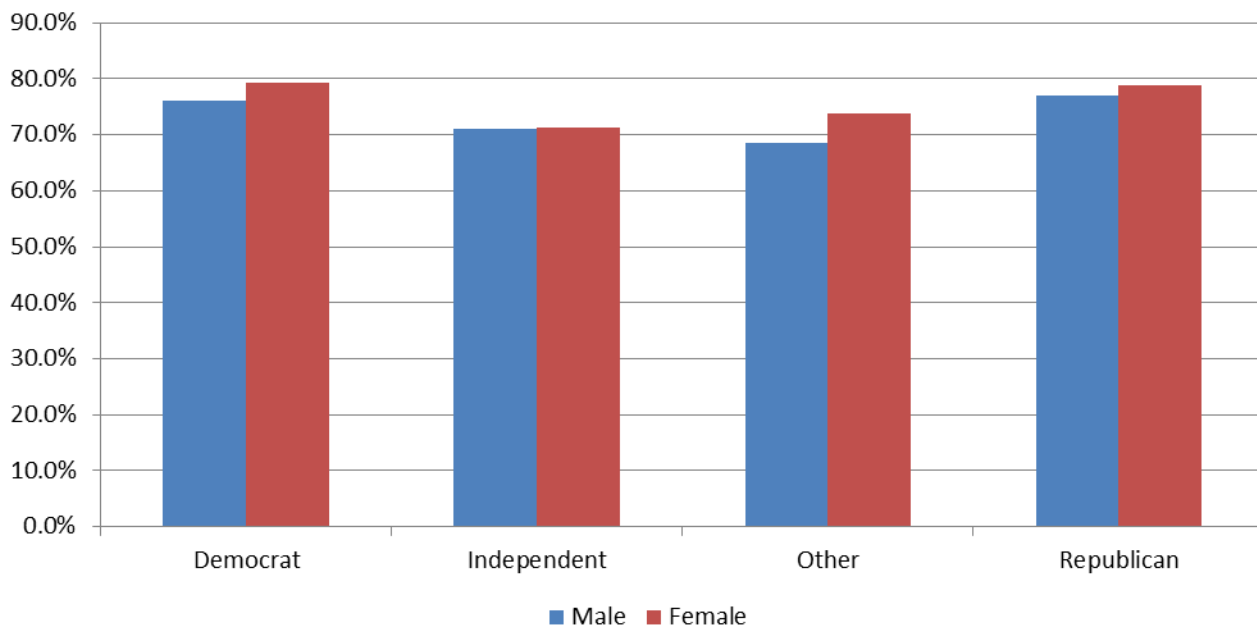
Voter Turnout by Age and Gender November 2012 City of Santa Clara



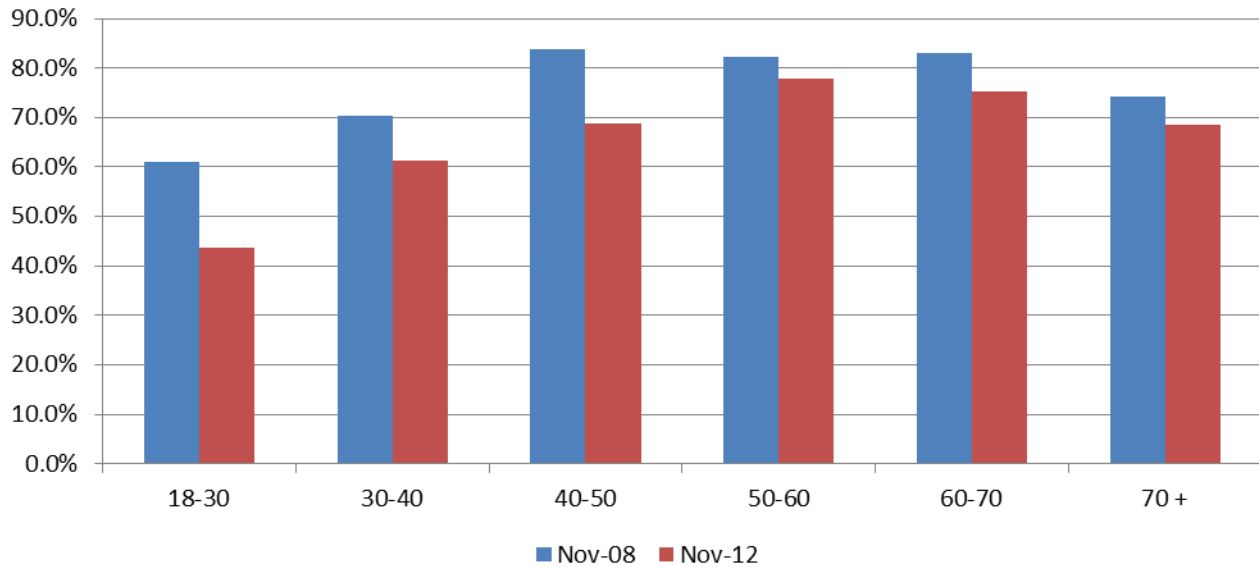
Voter Turnout - November 2012 Election Santa Clara With Portuguese Last Names By Gender and Party



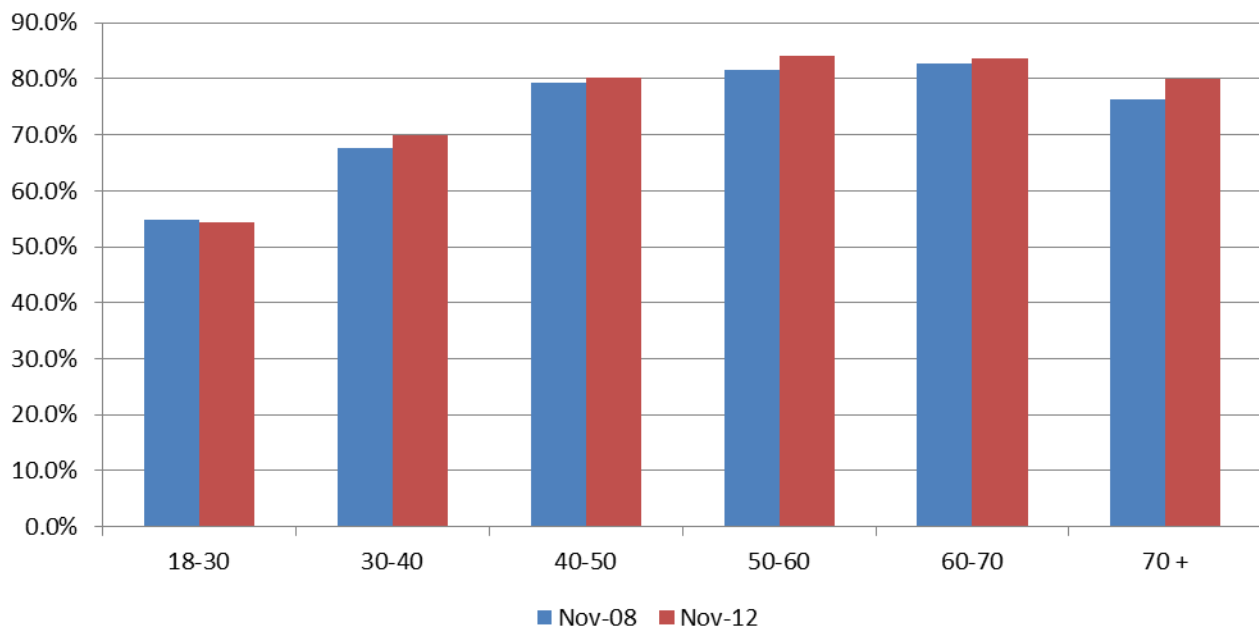
Voter Turnout - November 2012 Election City of Santa Clara By Gender and Party



Voter Turnout 2008 vs. 2012 Presidential Elections Santa Clara With Portuguese Last Names by Age



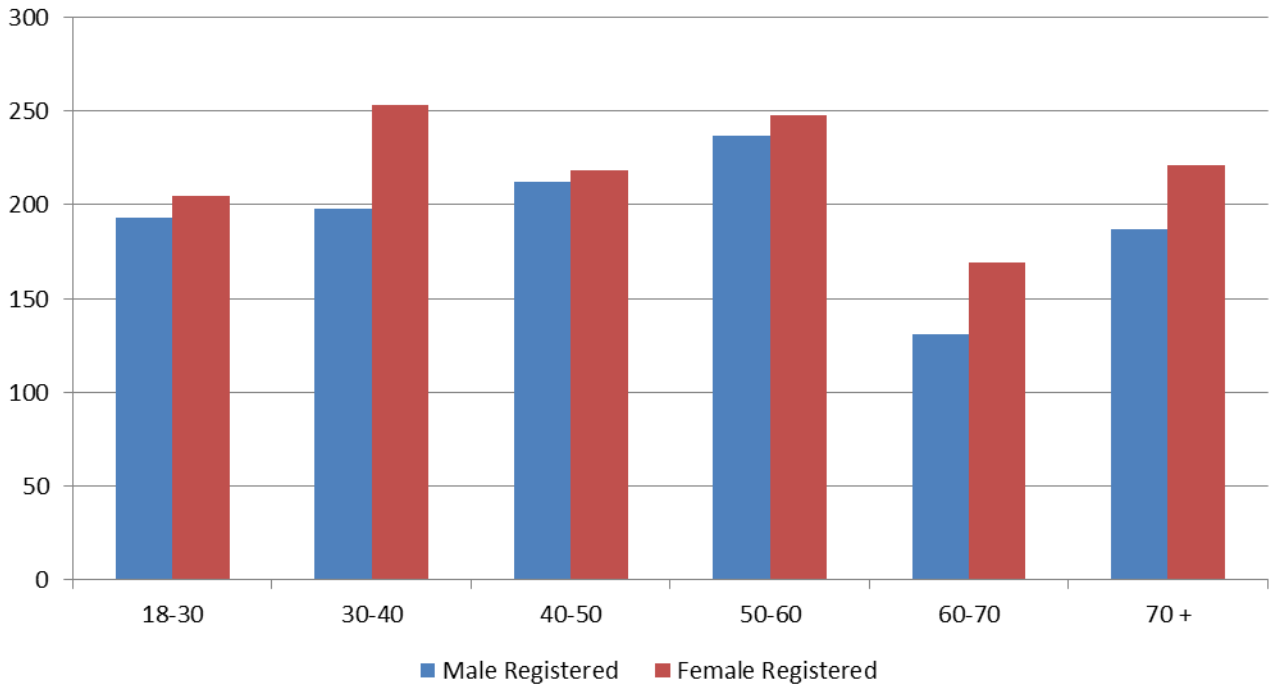
Voter Turnout 2008 vs. 2012 Presidential Elections City of Santa Clara by Age



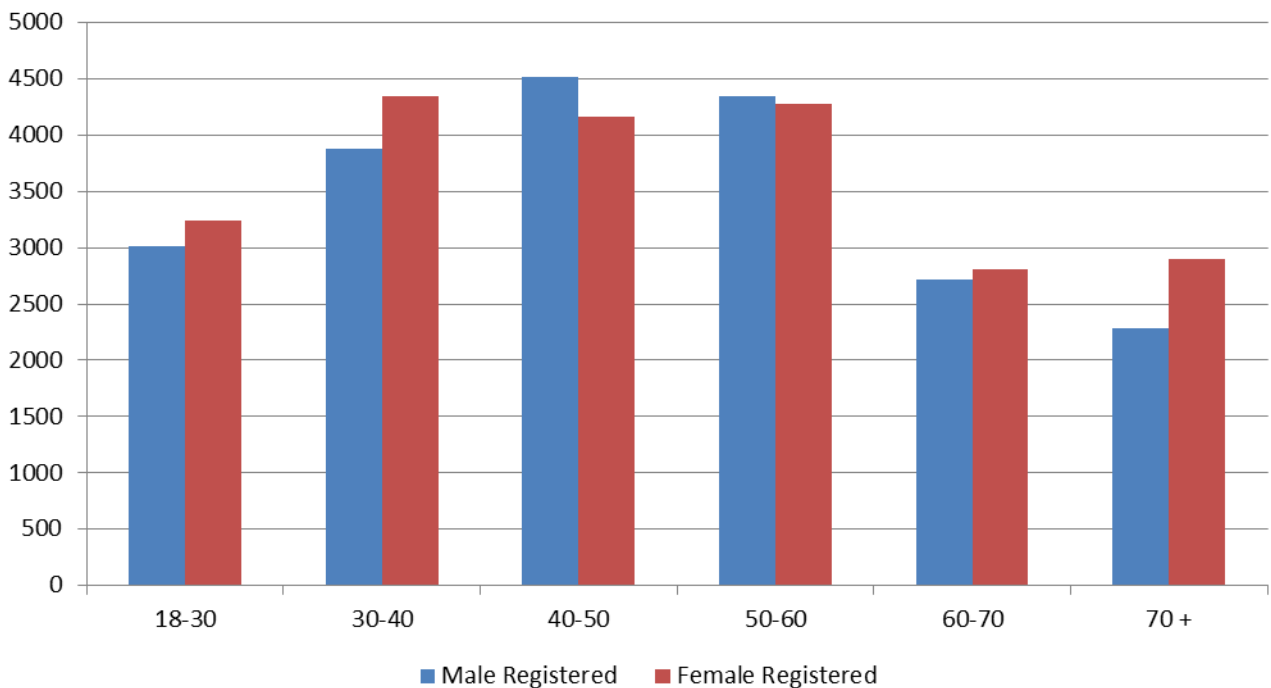
Appendices

Registered Voters by Age and Gender	9
Registered Voters by Age and Party	10
Registered vs. Actual Voters by Age and Gender	
November 2012	11
Registered vs. Actual Voters	12
Actual Voters by Gender and Party – November 2012	13
Voted in both 2008 and 2012 Presidential Elections	14
Voted in all last three elections	14

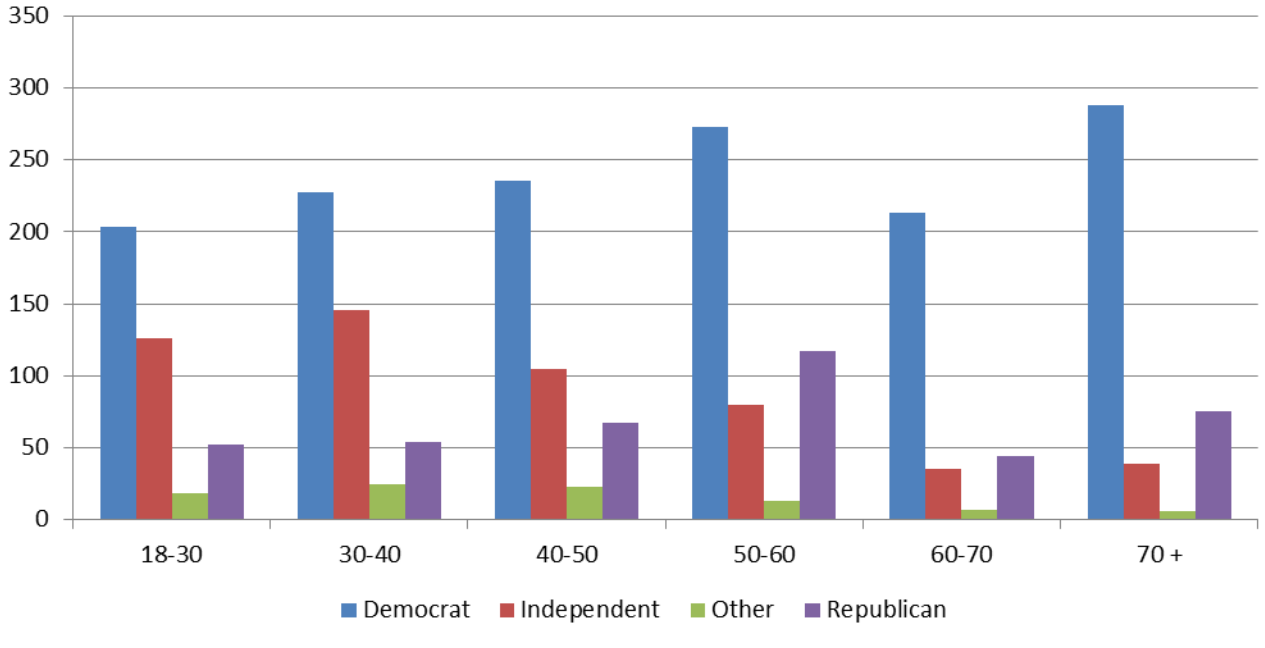
Registered Voters by Age and Gender Santa Clara With Portuguese Last Names



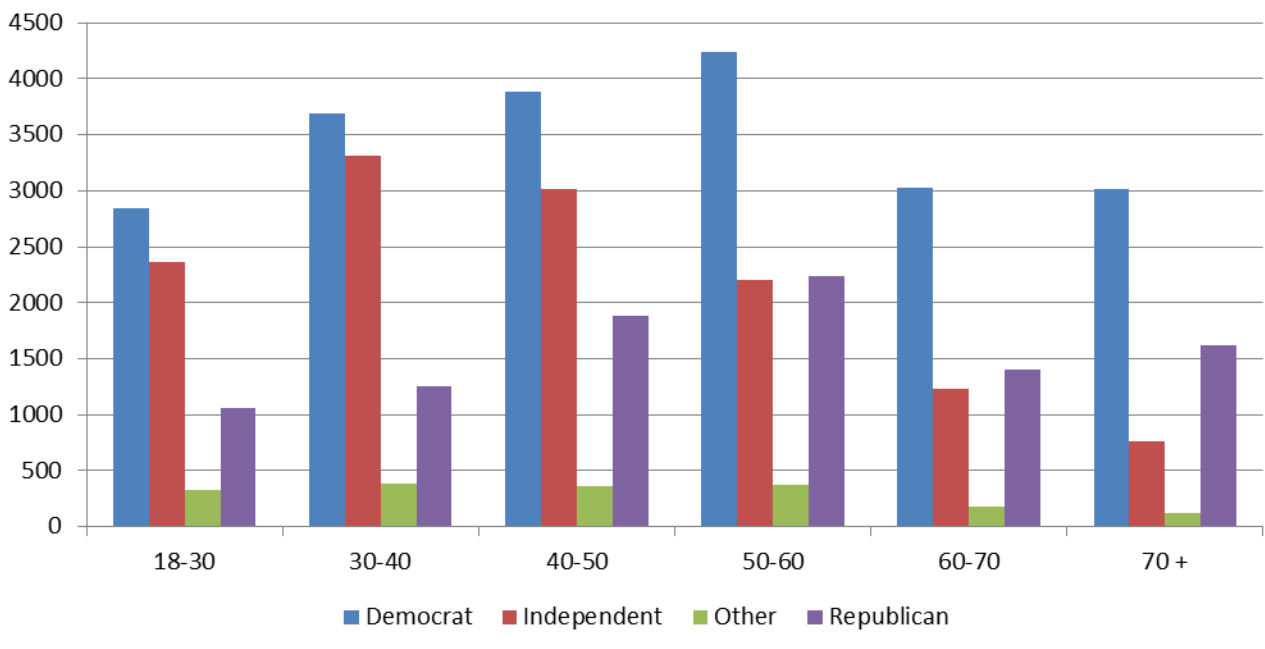
Registered Voters by Age and Gender City of Santa Clara



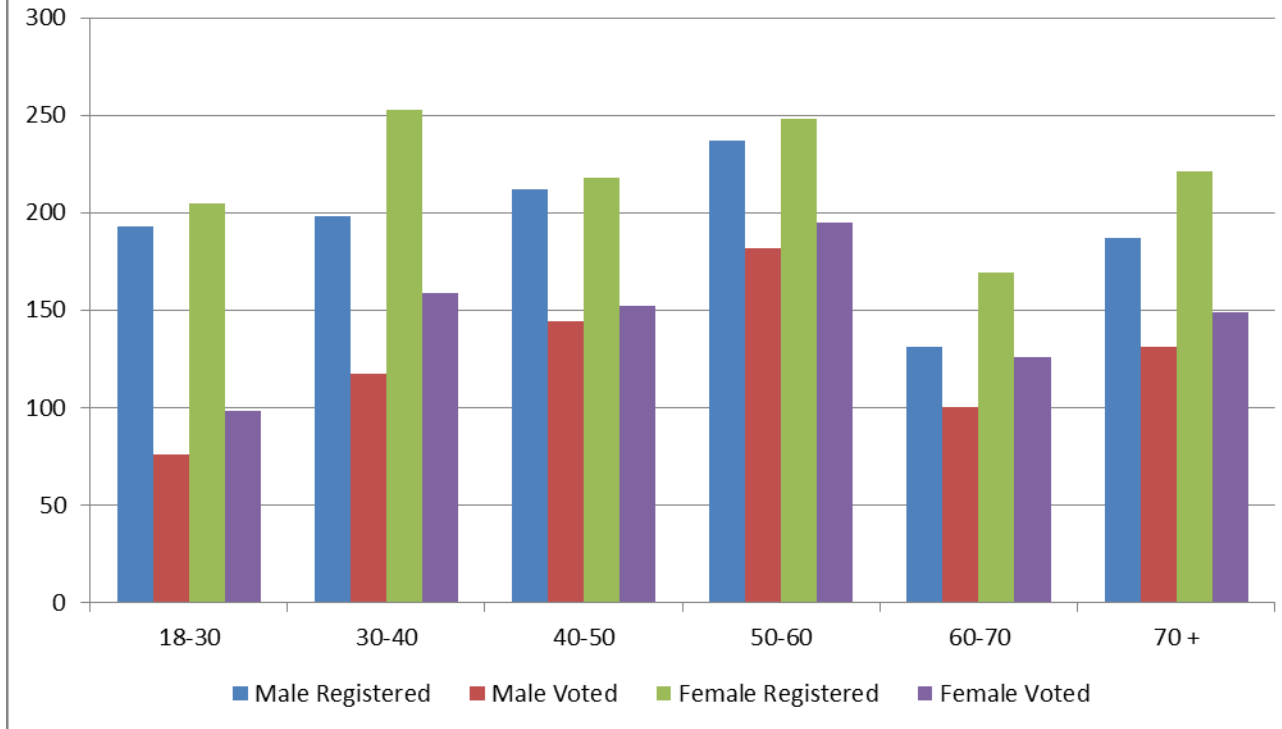
Registered to Vote by Age and Party Santa Clara With Portuguese Last Names November 2012



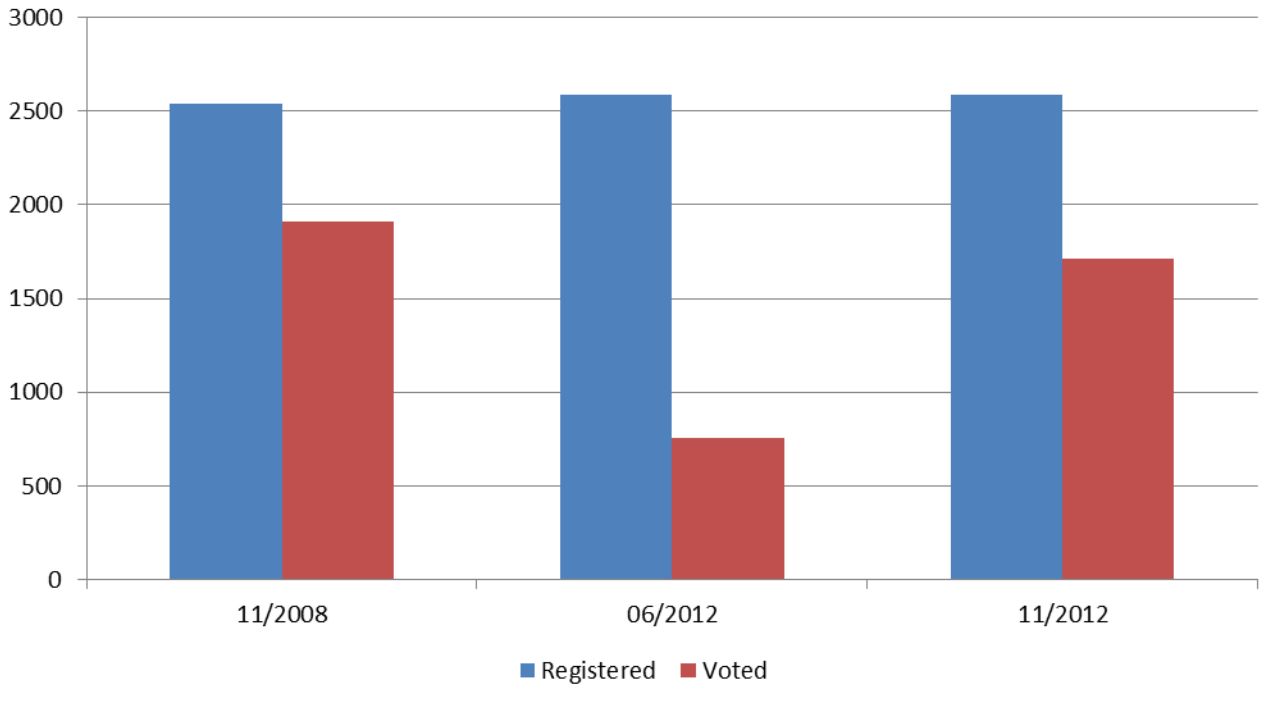
Registered to Vote by Age and Party City of Santa Clara November 2012



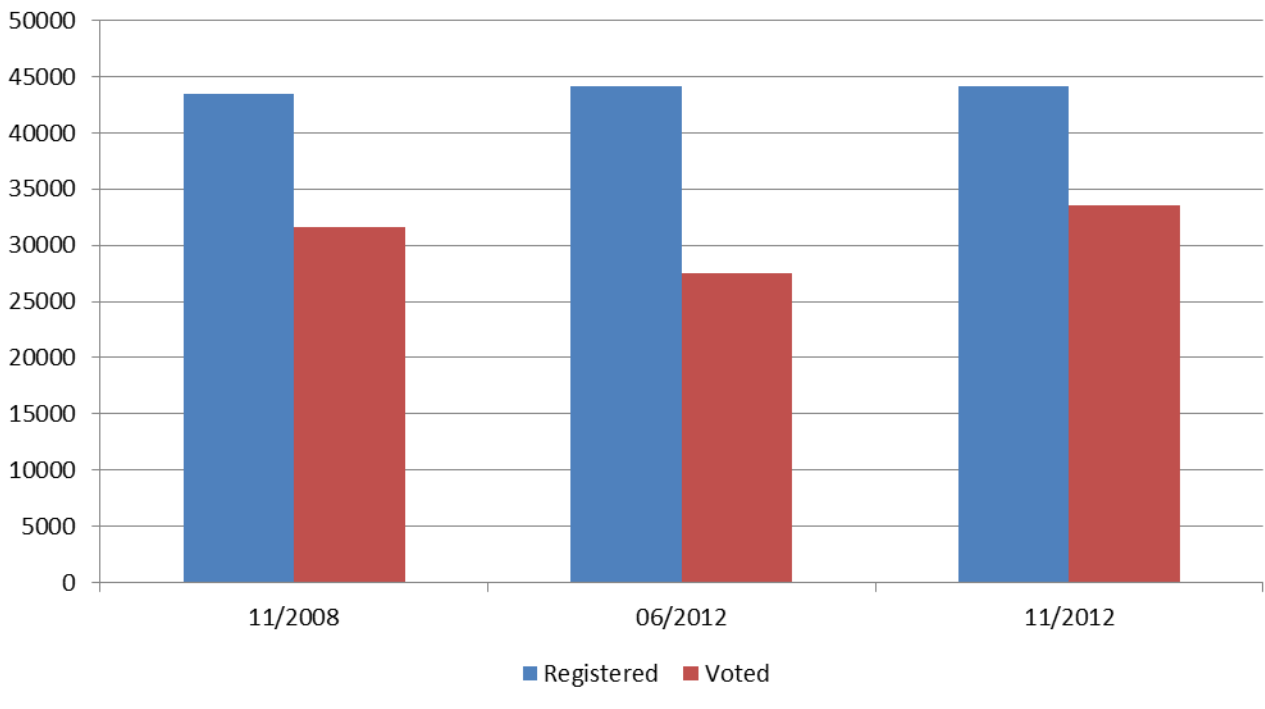
Voter Turnout - November 2012 Santa Clara With Portuguese Last Names By Age and Gender



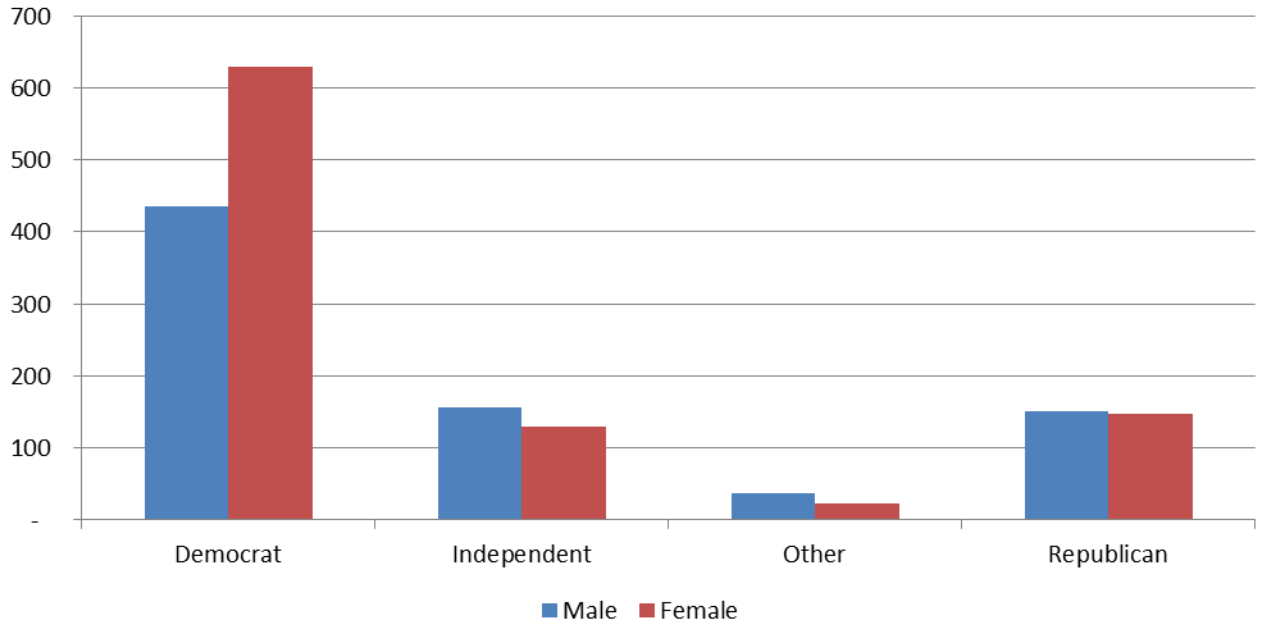
Registered Voters vs. Actual Voters Santa Clara With Portuguese Last Names



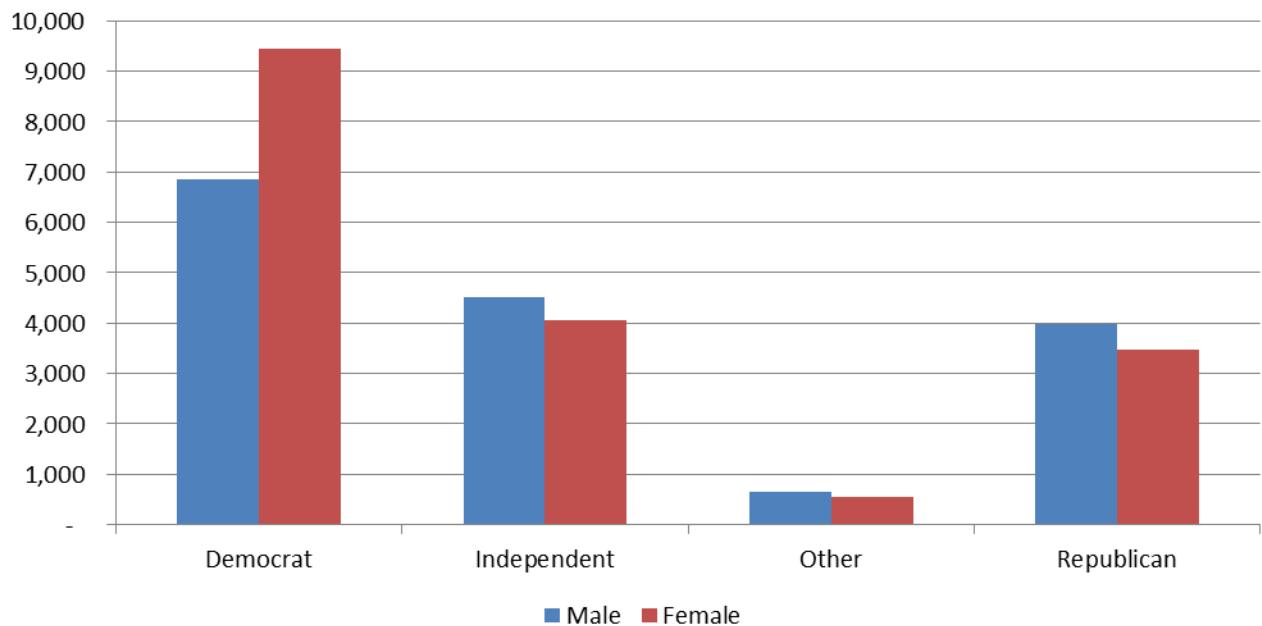
Registered Voters vs. Actual Voters City of Santa Clara



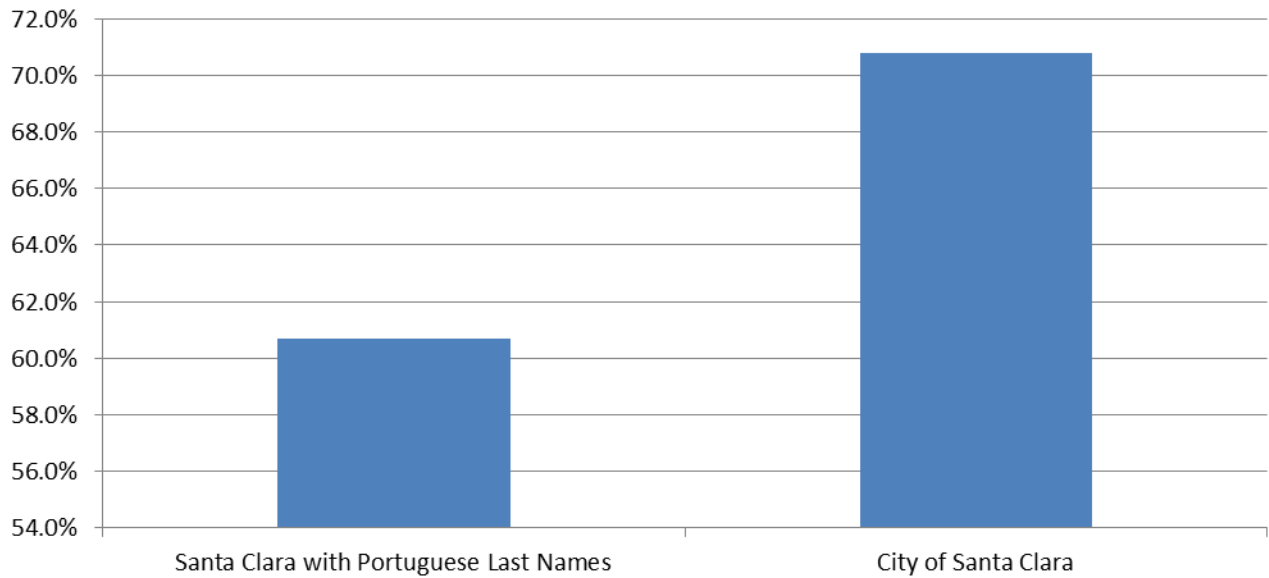
Voted in November 2012 Election Santa Clara With Portuguese Last Names Actual Voters By Gender and Party



Voted in November 2012 Election City of Santa Clara Actual Voters By Gender and Party



Voter Turnout
Voted in Both 2008 and 2012 Presidential Elections
Santa Clara With Portuguese Last Names
vs. City of Santa Clara



Voter Turnout
Voted in Last 3 Elections
Santa Clara With Portuguese Last Names
vs. City of Santa Clara

